

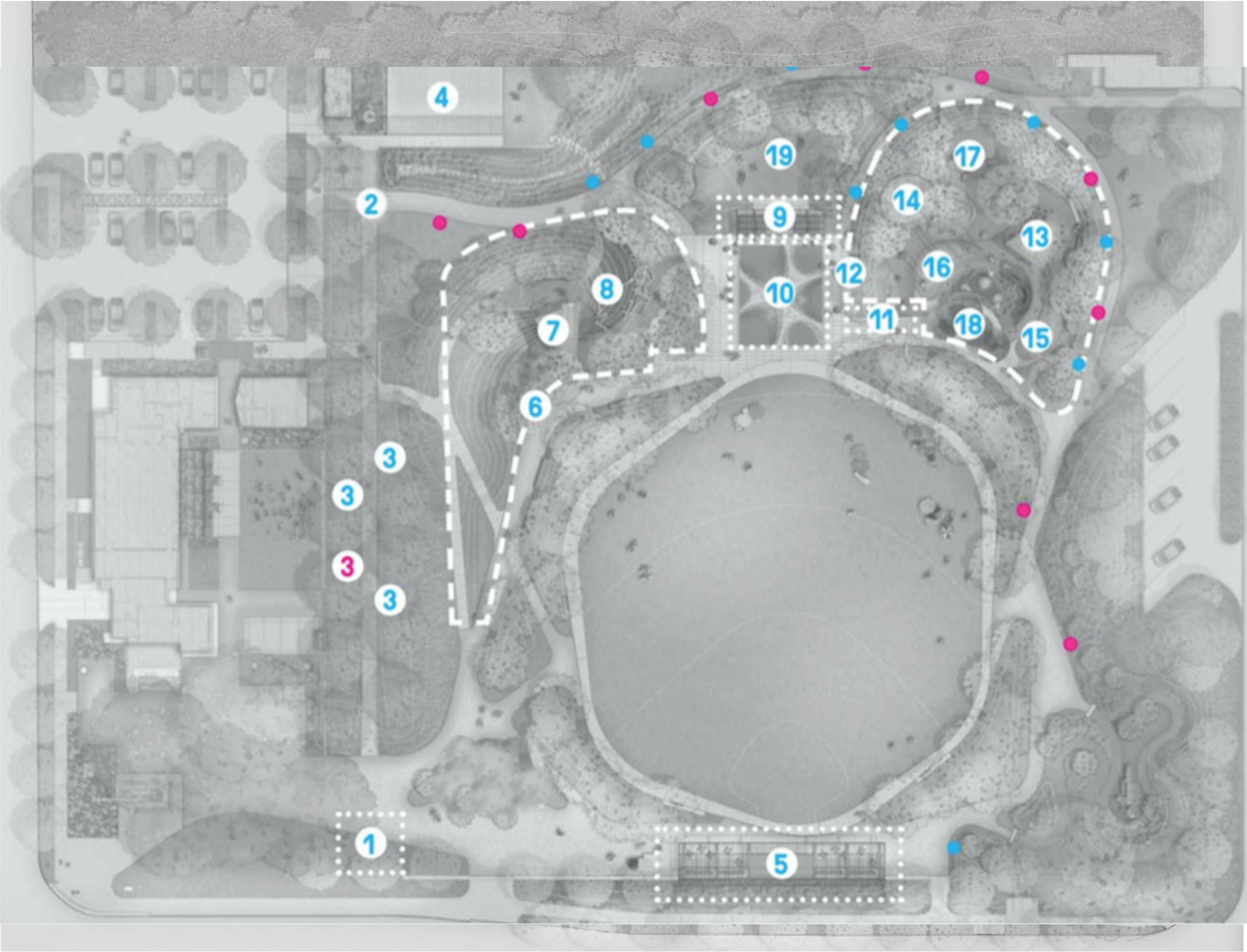
# EVELYN'S PARK PHASE II GIVE TO GROW CAMPAIGN

---



# EVELYN'S PARK DONOR ITEMS

- 1 Luminaries
  - 2 Garden Gateway
  - 3 Outdoor Living Rooms
  - 4 Solar Pavilion
  - 5 Trevilion
  - 6 Mount Bellaire
  - 7 Double Slide
  - 8 Log Jam
  - 9 The Veranda
  - 10 Splash n' Play
  - 11 Bird Donor Wall
  - 12 Discovery Hill
  - 13 Fan Slide
  - 14 The Nest
  - 15 Tunnel
  - 16 Grass Reeds
  - 17 Barn Swallow
  - 18 Lily Pads
  - 19 Meadow Garden
  - 20 Pathlighters
- Donated Pathlighter
- Available Pathlighter



# TREVILION



# TREVILION

As the most notable architectural shade structure at Evelyn's Park, the Trevilion offers a large, shady, seating space at the end of the Event Lawn. Part Trellis, part pavilion, this structure meets a variety of park needs. Showcasing sleek painted metal, warm woods, and stainless steel metal cables, this architecturally engaging structure acts as a gateway into the park from Bellaire Boulevard.

Bench seats attached to metal cables allow park guests to sway as they sit under the fans to create a comfortable, fun, and cool space. Movable seating provides flexible park furnishings to accommodate events, picnics, and resting areas.

**Donation Range:**

\$500,000

**Number Available:** 1

**Number Sold:** 0





# SPLASH N' PLAY

A photograph of a splash pad area with several children playing in the water jets. The image is overlaid with a semi-transparent blue filter. The text "SPLASH N' PLAY" is centered in white, bold, sans-serif font. In the background, there are trees and a wooden building.

# SPLASH N' PLAY

The Splash n' Play Area is composed of an intricate paving pattern symbolizing the elements of a flower. Comprised of jets and lights, this space is a fun and engaging space for kids and families alike.

Centrally located, this dynamic space can also serve as a plaza for events when the fountains are not in use.

Donation Range:

\$500,000

Number Available: 1

Number Sold: 0





# DISCOVERY HILL

# DISCOVERY HILL

Discovery Hill serves as the primary playscape for younger children. Complete with giant mounds to jump and play on, this play area includes grass reeds, a precast fan slide, a tunnel, a majestic wooden barn swallow, and giant lily pads for shade. Play spinners and a sand pit provide multiple opportunities for parents to play with their children. Multiple seating areas can accommodate a variety of needs and provide space for the whole family.

Symbolic as a riparian wetland edge, cool and earthy tones tie together play elements provide an educational experience.

**Donation Range:**

\$500,000

**Number Available:** 1

**Number Sold:** 0



# DISCOVERY HILL

## 13 FAN SLIDE

This Fan Slide is an artful addition to the younger children’s play area. This sleek and timeless slide is fun for smaller children and provides parents an opportunity to slide with their kids.

Donation Range:

\$50,000

Number Available: 1

Number Sold: 0

## 14 NEST

The Nest is a whimsical nest-shaped sand pit that contains a splash table. Kids will have fun shoveling sand and making their own artistic creations. Surrounded by wooden logs, The Nest contains ample seating opportunities.

Donation Range:

\$50,000

Number Available: 1

Number Sold: 0

## 15 PLAY TUNNEL

The play tunnel is a fun space to crawl and explore. This egg-like tunnel shape continues to carry the theme of the park while creating an artful aesthetic.

Donation Range:

\$50,000

Number Available: 1

Number Sold: 0



# DISCOVERY HILL

## 16 GRASS REEDS

The Grass Reeds form the Discovery Hill’s wetland edge. Comprised of colorful metal and rope, kids can leap from reed to reed. Serving as a functional and fun play piece, the Grass Reeds also stand as an elegant art piece within the aquatic edge theme.

Donation Range:

\$50,000

Number Available: 1

Number Sold: 0



# DISCOVERY HILL

## 17 BARN SWALLOW

The Barn Swallow is a one-of-a-kind play structure. Composed of hand chiseled logs, this bird play structure is built from high quality rot-resistant wood that will stand the test of time to create an engaging playscape for years to come. In addition to a fun object to climb and play, this majestic bird serves as a beautiful and educational art piece.

Donation Range:

\$100,000

Number Available: 1

Number Sold: 0



# DISCOVERY HILL

## 18 LILY PADS

These whimsical Lily Oads create a bold and artful shade canopy. Comprised of painted metal and wood seating, these fantastic elements cast striking shadows on the playground's surface.

Donation Range:

\$50,000

Number Available: 4

Number Sold: 0



A photograph of an outdoor living room area, overlaid with a semi-transparent teal filter. In the foreground, there is a curved wooden bench surrounding a small round table, situated on a wooden deck. A large, open patio umbrella stands behind the bench. In the background, a two-story house with light-colored siding and a metal roof is visible, surrounded by trees and lush greenery.

# OUTDOOR LIVING ROOMS

# OUTDOOR LIVING ROOMS

The Outdoor Living Rooms staggered along the main promenade will create a special “private garden” ambiance for visitors to enjoy.

These cozy garden enclosures echo the architecture of the park with beautiful and robust wood and metal detailing.

The Living Rooms are nestled in the park’s lush landscape offering name recognition at the entrance.

**Donation Range:**

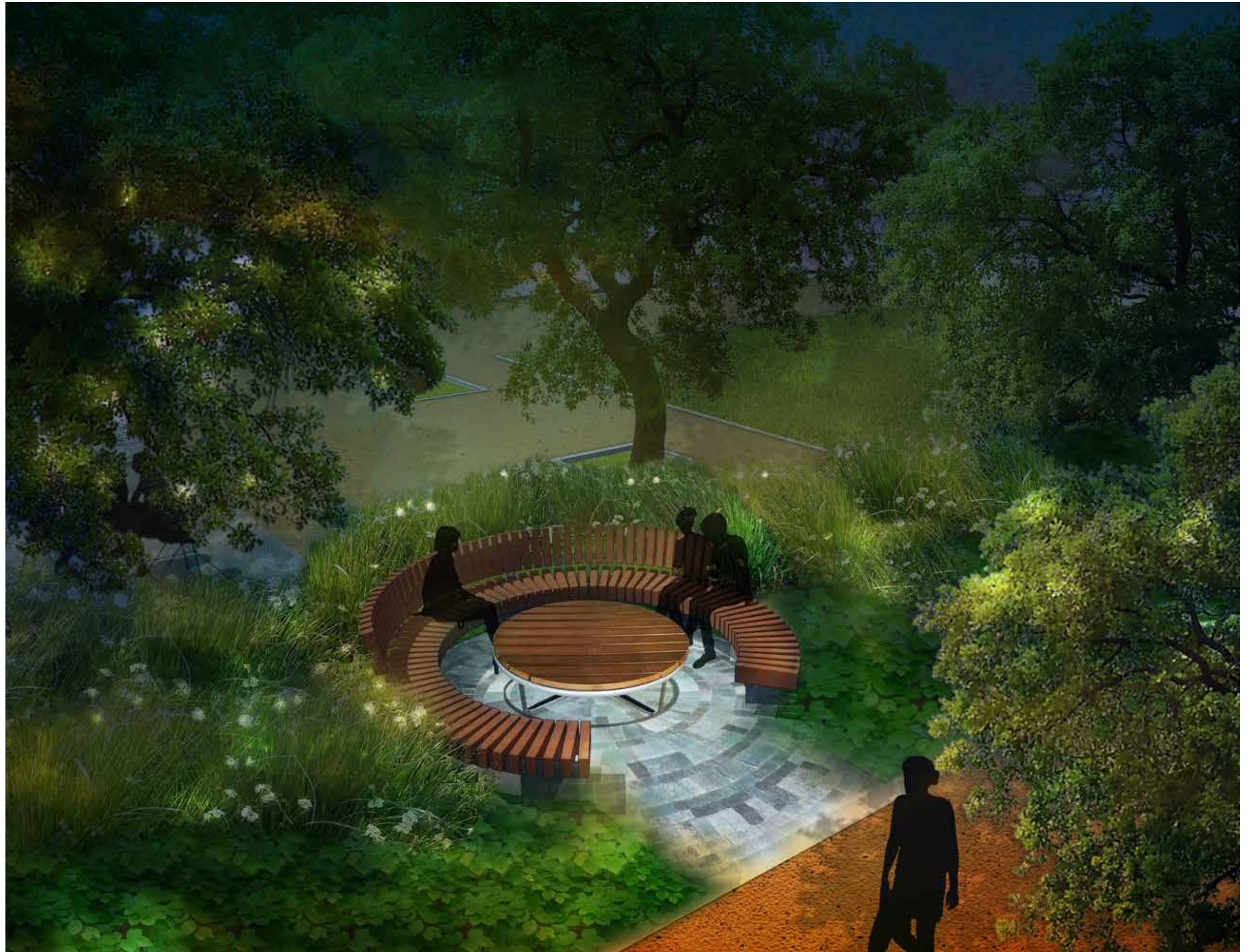
\$250,000

**Number Available:** 3

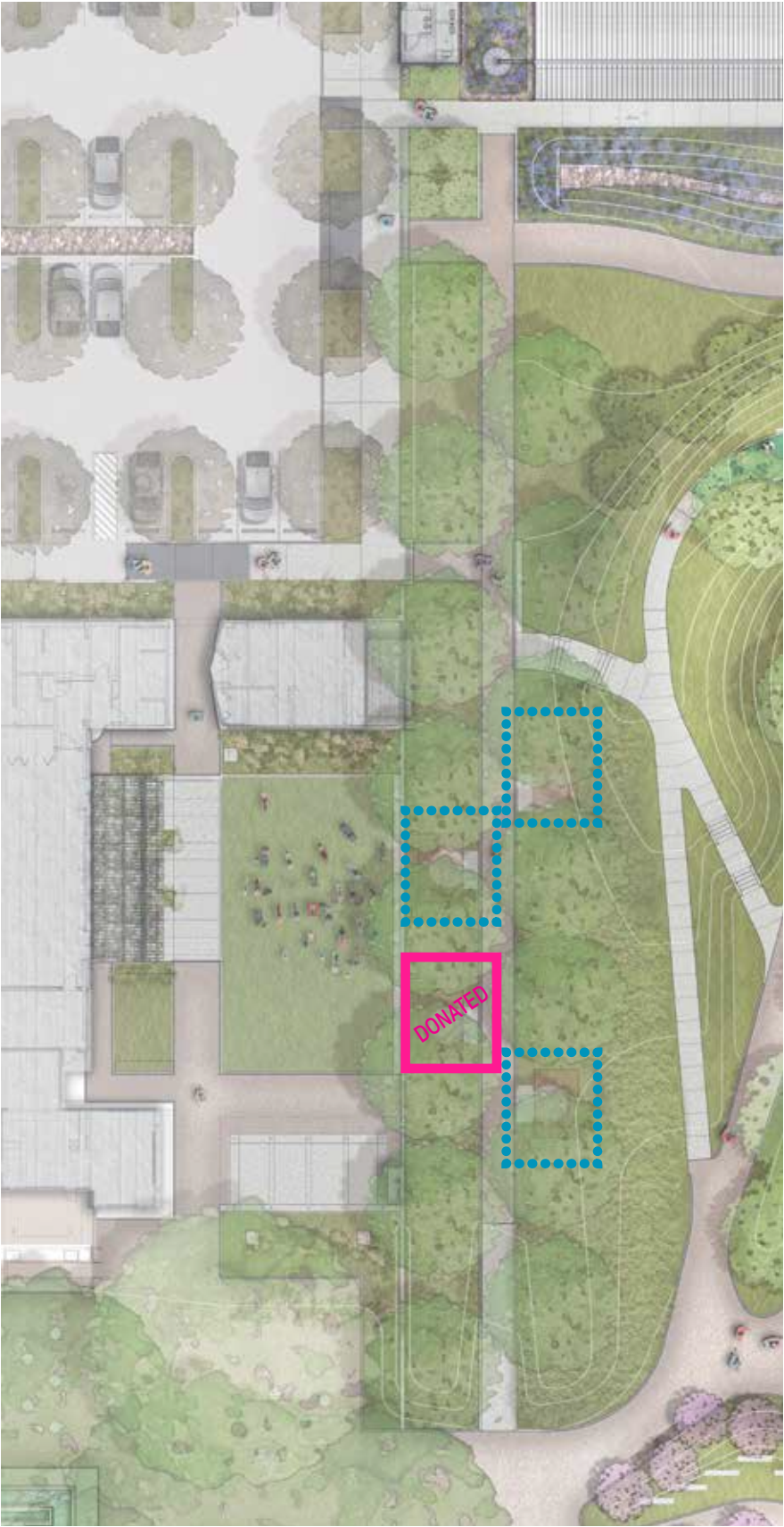
**Number Sold:** 1



## OUTDOOR LIVING ROOMS



OUTDOOR  
LIVING ROOMS



An architectural rendering of a modern solar pavilion. The structure features a long, low, dark-colored roof supported by several vertical posts. The roof has a slight overhang on the left side. Inside the pavilion, there are several people walking and standing. In the background, there is a small building with a corrugated metal roof and a large arched opening. The entire scene is overlaid with a semi-transparent blue filter. The text "SOLAR PAVILION" is centered in the middle of the image in a bold, white, sans-serif font.

# SOLAR PAVILION

# SOLAR PAVILION

Perfect for parties, picnics, and events, the Solar Pavilion is a shady refuge with a beautiful architectural character. Supporting a total of 14,000 watts of solar panel power, this pavilion keeps park visitors cool during the hot summer months in an environmentally sustainable fashion.

In addition, water collected from the roof runs into a cistern which helps create water pressure for the irrigation system.

The Solar Pavilion fits within the architectural character of the site through the use of sleek metal and warm wood accents.

**Donation Range:**

\$200,000

**Number Available:** 1

**Number Sold:** 0



A vibrant, stylized illustration of a park scene. In the foreground, a family of five is walking along a paved path. A man in a grey t-shirt and shorts is holding the hand of a woman in a white long-sleeved shirt and dark pants. They are walking towards the right. In the background, a large, multi-level wooden play structure with many vertical posts and horizontal beams is visible. Several children are playing on the structure. To the right of the play structure, there is a covered picnic area with wooden tables and benches. A few people are sitting at the tables. The background is filled with lush green trees and a clear blue sky. The overall scene is bright and cheerful, suggesting a sunny day at a family-friendly park.

# MOUNT BELLAIRE

# MOUNT BELLAIRE

Mount Bellaire serves as the primary playscape for older children. Complete with a giant mound to climb and play on, this play area includes steppers, a pre-cast concrete double slide, and a log jam play structure. A large shade structure keeps the slide cool as kids race their friends.

Symbolic as a meadowscape, earthy tones and natural play elements provide an educational experience.

Donation Range:

\$200,000

Number Available: 2

Number Sold: 0



# MOUNT BELLAIRE

## 7 DOUBLE SLIDE

This Double Slide is made from glass fiber reinforced pre-cast concrete and is an artful addition to the older children's play area. In addition to being a fun way to race with friends, this sleek slide is durable, elegant, and timeless.

Donation Range:

\$50,000

Number Available: 1

Number Sold: 0



## 8 LOG JAM

The Log Jam is a one-of-a-kind nature play structure. Composed of hand chiseled logs, this structure is built from high quality rot-resistant wood that will stand the test of time to create an engaging playscape for years to come.

Donation Range:

\$100,000

Number Available: 1

Number Sold: 0





# THE VERANDA

# THE VERANDA

Overlooking the lawn and adjacent to the Splash n' Play area, The Veranda serves as a shady haven to the park's most central and active spaces. Composed of sleek metal and warm wood accents, this structure frames the central views of the site. Built-in seating provides a resting spot for guests without blocking access through activity zones.

With a prime view of the meadow, lawn, and splash pad, this addition will be one of the most photographed areas of the site.

Donation Range:

\$100,000

Number Available: 1

Number Sold: 0



An aerial landscape architectural plan of 'The Meadow Garden'. The plan features a large central meadow area with various paths, including a prominent curved path on the left and a straight path at the bottom. There are several building footprints, including a large rectangular building at the bottom center and smaller structures along the top edge. The plan is overlaid with a blue tint and includes contour lines and various landscape features like trees and shrubs.

# THE MEADOW GARDEN

# THE MEADOW GARDEN

The meadow garden contains a lawn suitable for small gatherings, play, and events. A diverse palette of meadow planting attracts wildlife and provides habitats for many species. This beautiful, naturalized setting promotes a wide variety of ecological funtions.

Water drains through a cobble swale and into planting, purifying stormwater of many pollutants before it is returned to the soil. In addition, the entire lawn is sunken to collect and drain large volumes of water in a sustainable way. This beautiful garden can be overlooked from The Veranda where many weddings, events, and photography will take place.

Donation Range:

\$100,000

Number Available: 1

Number Sold: 0



# LUMINARIES

A person is walking on a paved path that curves through a park. The path is bordered by lush green bushes and tall grass. In the background, there are several trees with dense foliage. The entire scene is overlaid with a semi-transparent blue filter. The word "LUMINARIES" is written in large, white, bold, sans-serif capital letters across the center of the image. On the left side, there are several vertical wooden posts, each with the text "HOUSTON FOUNDATION" written vertically on them. The person walking is seen from the side, wearing a dark jacket and light-colored pants.

# LUMINARIES

A collection of Luminaries anchors the view from the promenade and honors major commitments to the establishment of the park.

Delicate metal pillars combine typography with straight lines of trunk-like columns, balancing sculpture and statement.

Appearing as a grove of trees, these recognition pieces illuminate the letters and landscape beyond.

Donation Range:

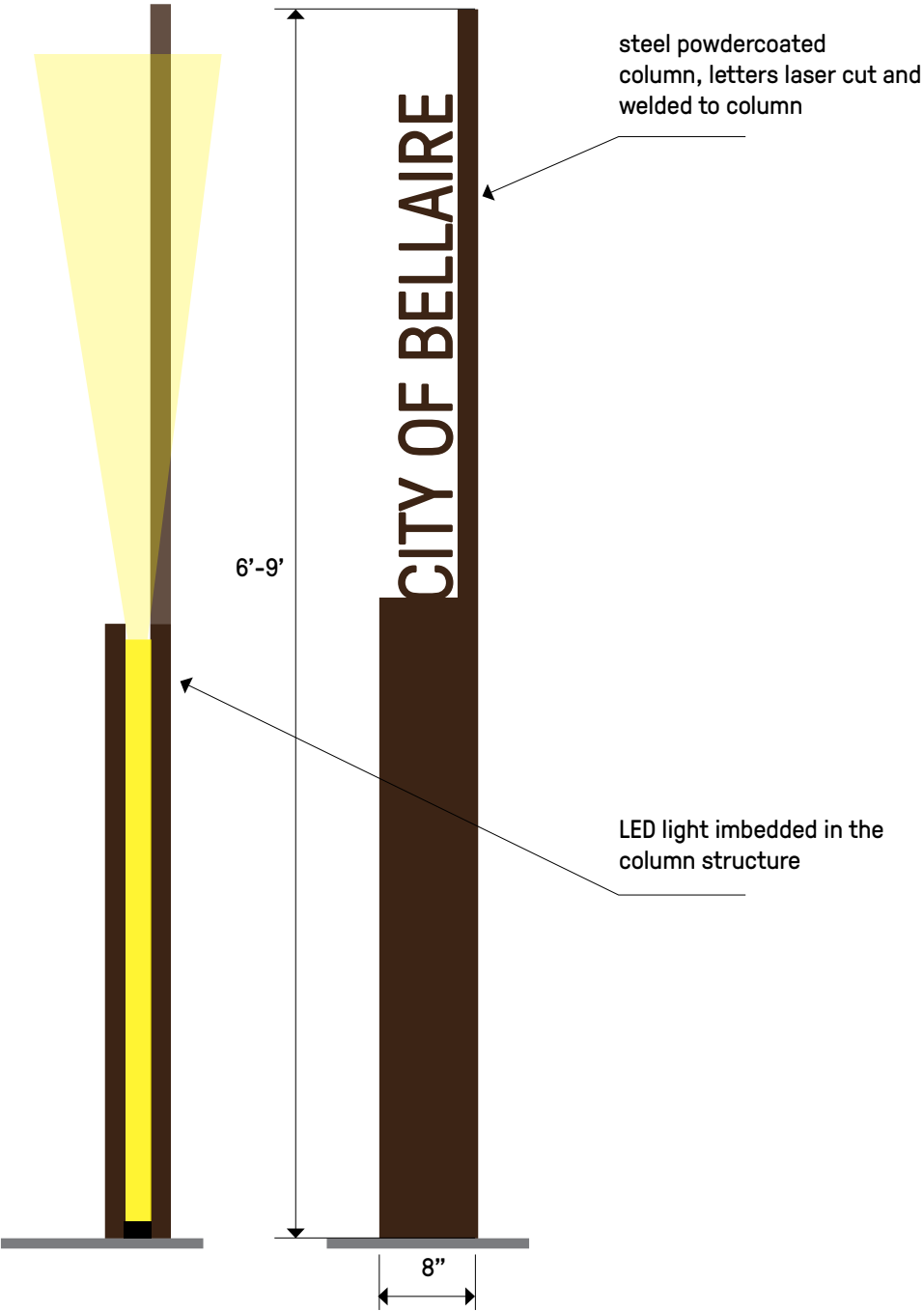
\$100,000 and up

Number Available: 3

Number Sold: 3



LUMINARIES



# PATH LIGHTERS



FRINGE TREE

# PATH LIGHTERS

The Path Lighters create a special route of discovery around the park's topography.

These beautifully lit panels serve an important educational purpose by highlighting native trees.

Interspersed throughout the park, donors may select from a variety of tree species and their corresponding locations.

The Path Lighters offer a unique opportunity to celebrate the park's natural surroundings to create a botanical experience. There are 12 total Path Lighters located in the park. Three of them are still available for donation.

**Donation Range:**

\$50,000

**Number Available:** 9

**Number Sold:** 9



# PATH LIGHTERS

## AVAILABLE

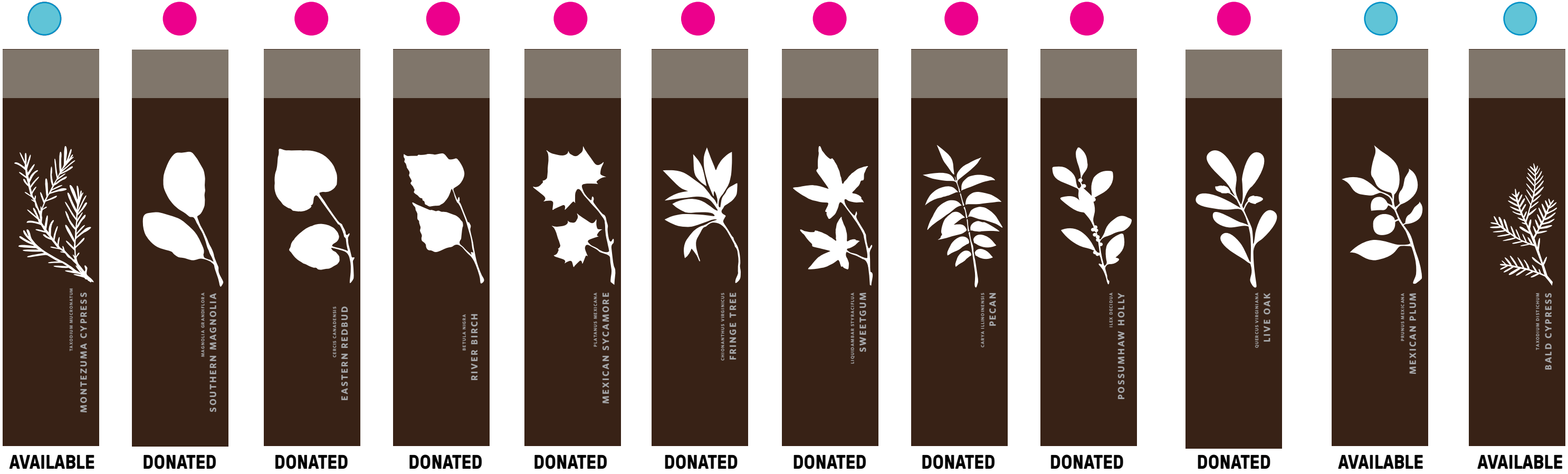
- 1 BALD CYPRESS
- 2 MONTEZUMA CYPRESS
- 3 MEXICAN PLUM
- 4 SPECIES TBD
- 5 SPECIES TBD
- 6 SPECIES TBD
- 7 SPECIES TBD
- 8 SPECIES TBD
- 9 SPECIES TBD

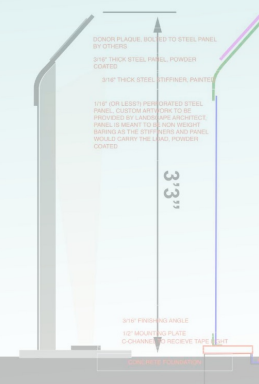
## DONATED

- 10 LIVE OAK
- 11 RIVER BIRCH
- 12 SOUTHERN MAGNOLIA
- 13 POSSUMHAW HOLLY
- 14 SWEETGUM
- 15 PECAN
- 16 FRINGE TREE
- 17 MEXICAN SYCAMORE
- 18 RED BUD



PATH LIGHTERS





# Garden Gateway

The Garden Gateway greets Park visitors with an elegant and bold pattern representing local flora and fauna, providing potential donors with a highly visible and unique place to be recognized in the Park. The Garden Gateway is located directly at the Newcastle entrance with easy access to all Phase 2 highlights. At night, the perforation will be illuminated from a rear linear light and provide a subtle glow to the entering patrons. The top ledge bend will hold donor names, varying in size according to the amount donated.

## Donation Range:

LEVEL 1:

\$5,000

LEVEL 2:

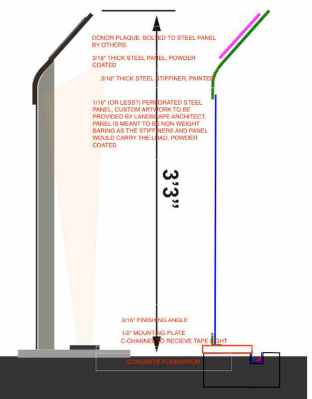
\$10,000

LEVEL 3:

\$15,000

LEVEL 4:

\$25,000





# BIRD DONOR WALL

# BIRD DONOR WALL

A work of art in its own right, the Bird Donor Wall stands at the entrance to the children’s moundscape playground and the Splash n’ Play area inspiring children and families alike.

The wall is a canvas for a colorful mosaic composed of metal panels with silhouettes of native birds. The colors of each panel are inspired by Texas wetlands.

As a compliment to the existing Butterfly Donor Wall, families will enjoy chosing from a selection of images and colors corresponding to their level of donation.

Donation Range:

LEVEL 1:  
\$1,500

LEVEL 2:  
\$2,500

LEVEL 3:  
\$3,500

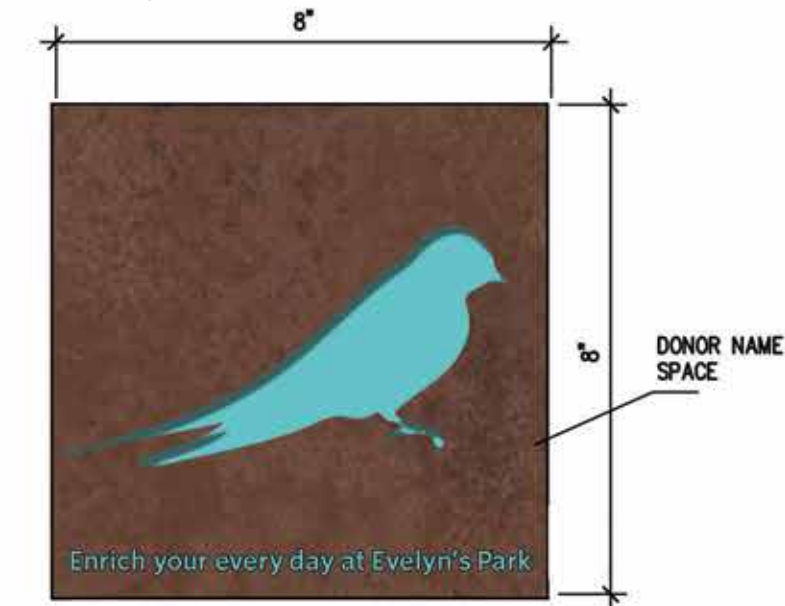
Number Available: 176

Number Sold: 0



BIRD DONOR WALL

LEVEL 3



BARN SWALLOW



RED-TAILED HAWK

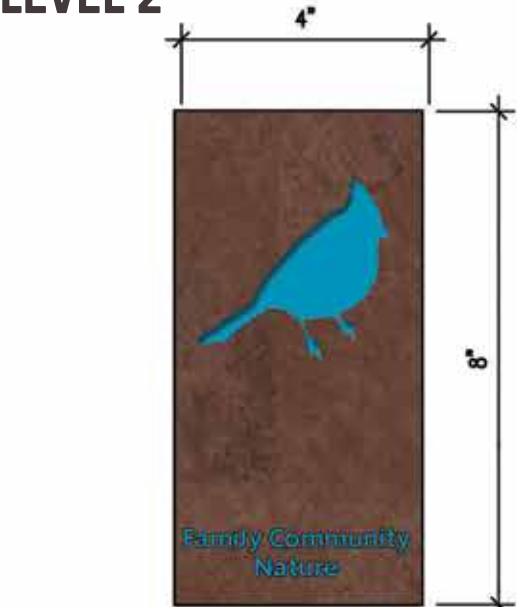


GREAT HORNED OWL



MALLARD

LEVEL 2



BLACKBIRD



RUBY-THROATED HUMMINGBIRD

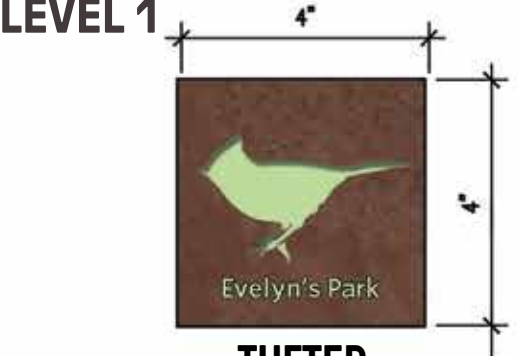


NORTHERN CARDINAL



WOODPECKER

LEVEL 1



TUFTED TITMOUSE



BLUE JAY



PINE WARBLER



**ENRICH YOUR EVERY DAY**  
**[WWW.EVELYNSPARK.ORG](http://WWW.EVELYNSPARK.ORG)**

